



# Respecting Country Working Together for Opportunity

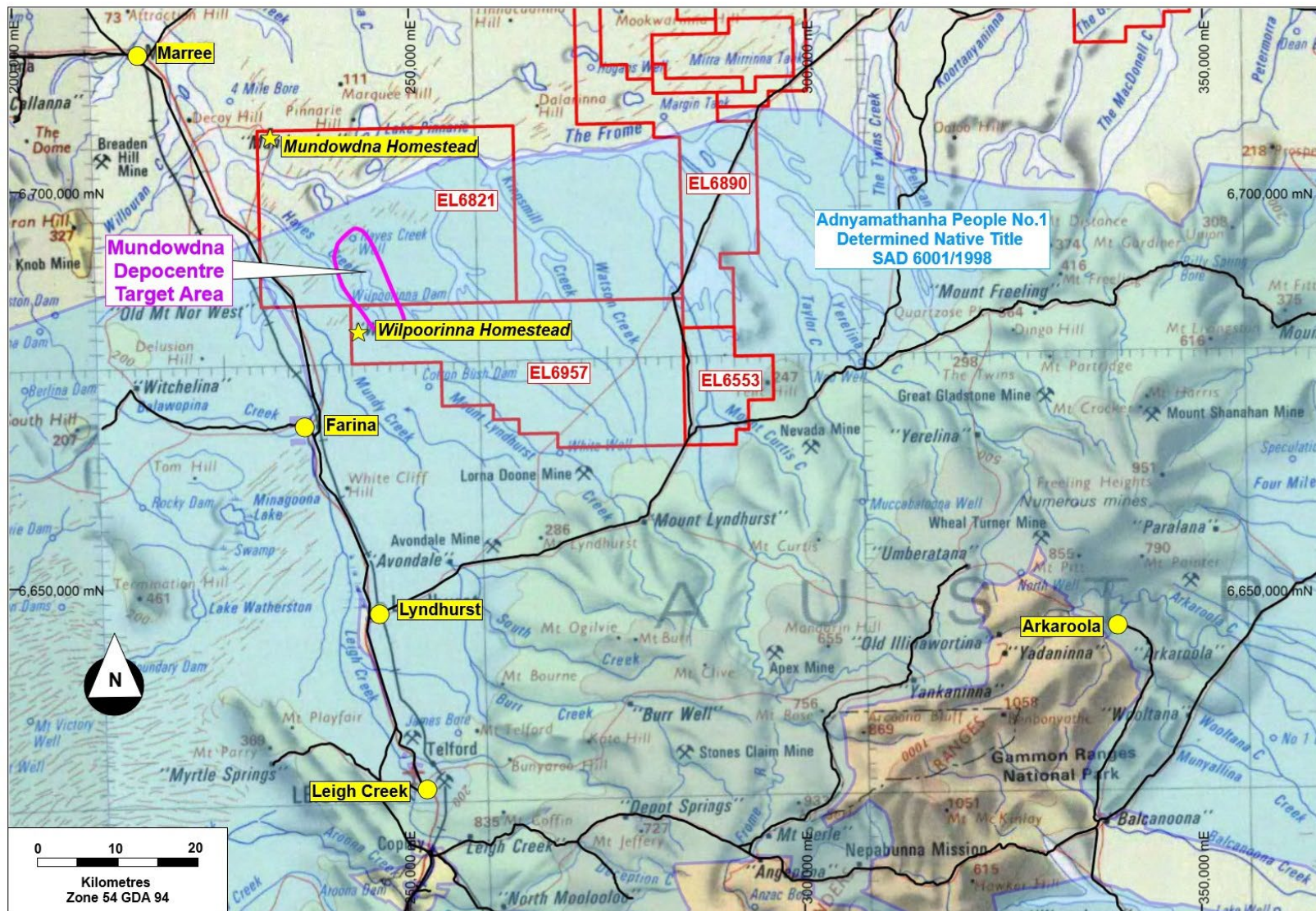
JULY 2025

Uranium Exploration Drilling –  
South Australia



# The Mundowdna Opportunity

## High-Potential Target – The Mundowdna Depocentre



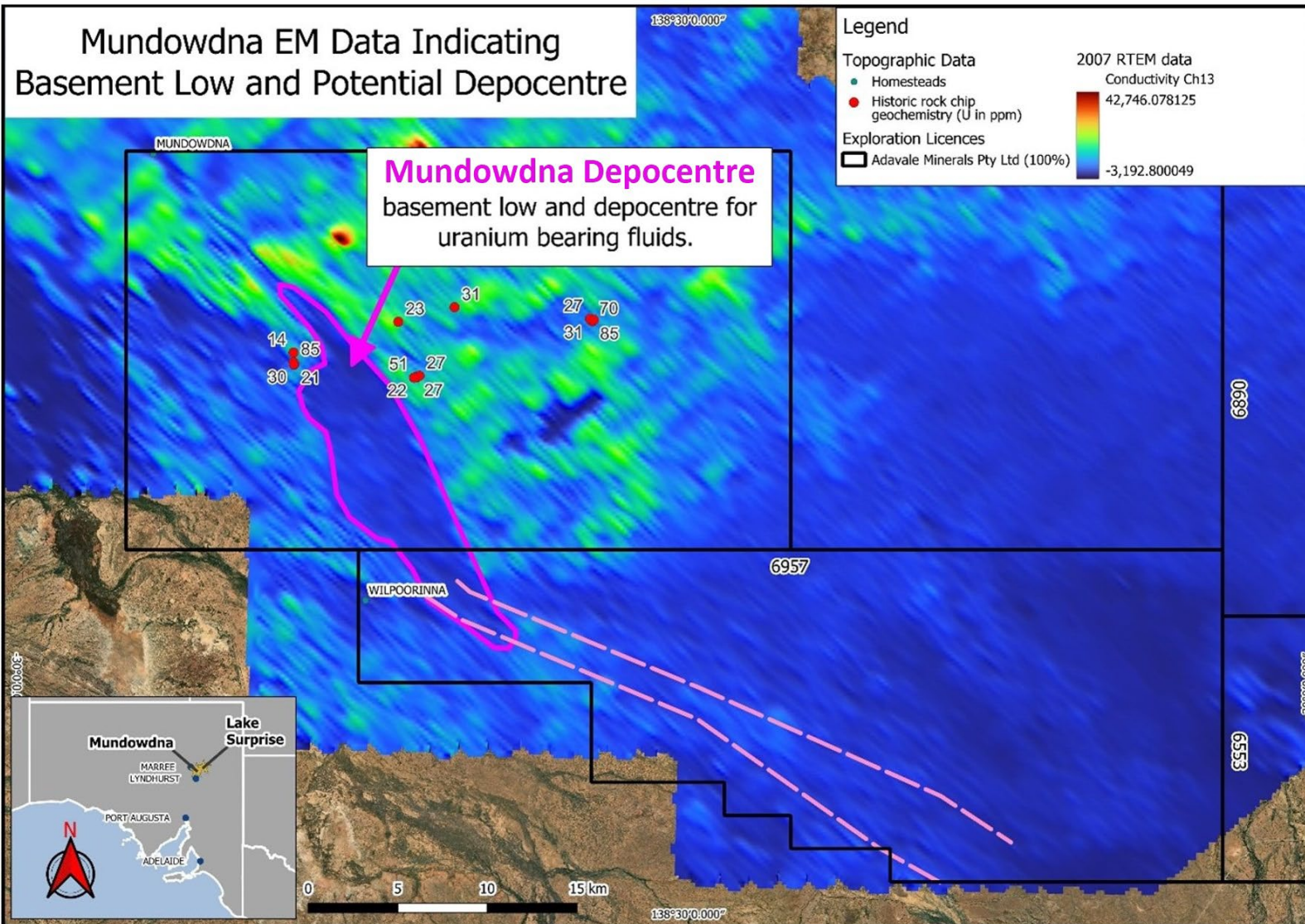
- Four granted Exploration Licences are covered by the Adnyamathanha Determined Lands
  - EL 6553
  - EL 6821
  - EL 6890
  - EL6957
- Analysis of airborne geophysics and geology has highlighted a potential basement low and sedimentary depocenter at the Mundowdna Prospect.
- The basement low is the likely area for uranium bearing fluids to accumulate and for Uranium mineralisation to deposit.
- Mundowdna is the primary exploration target for the Company in the Adnyamathanha Determined Lands.



# Mundowdna Exploration Plan: Low-Impact & Respectful

Airborne EM Survey highlighting Basement Low target area

Exploring With Care – Our Commitment to Country



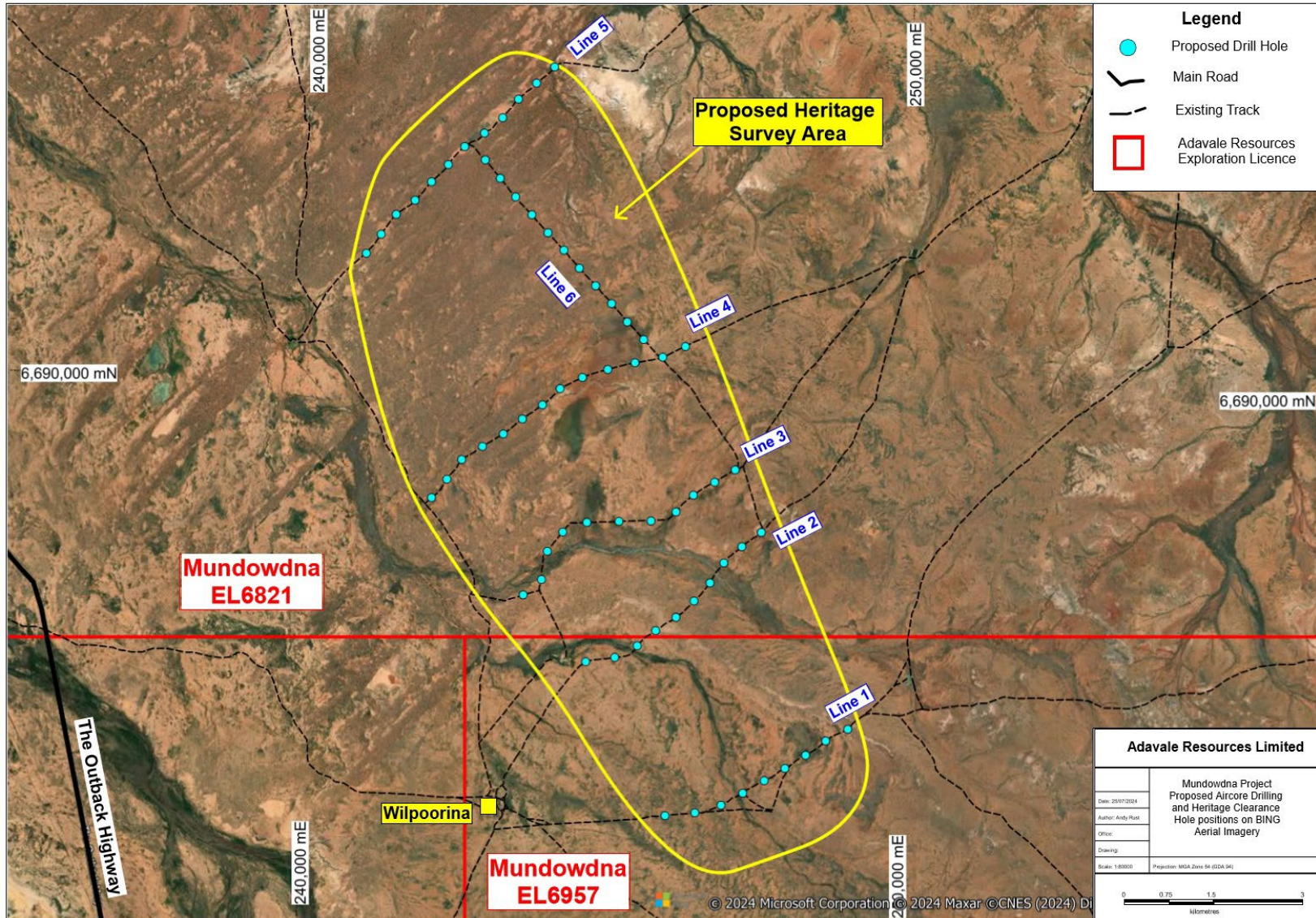
- Recently completed soil sampling and gamma surveys (March 2024) along existing station tracks and reprocessing of historical (2009) airborne EM data has identified a potential target area for the deposition of palaeochannel style uranium mineralisation at Mundowdna.
- Analysis has highlighted a potential basement low and sedimentary depocentre.
- The basement low is the likely area for uranium bearing fluids to accumulate and for Uranium mineralisation to deposit.
- Proposed Exploration will comprise Mud Rotary drilling and down hole gamma surveying to identify suitable sediments and uranium trap sites
- Proposed Mud Rotary drilling of the Depocentre will be along existing station tracks with a focus on six defined transects

Interpreted basement low and sedimentary depocentre and interpreted gravity low palaeochannel. This was identified using channel 9 – 15 of the re-processed EM Data. The image above shows channel 13 of the dataset.



# Mundowdna Uranium Project – Depocentre Target Area

## Proposed Transects for Mud Rotary Drilling on Existing Tracks



### Mud Rotary Drilling on existing tracks

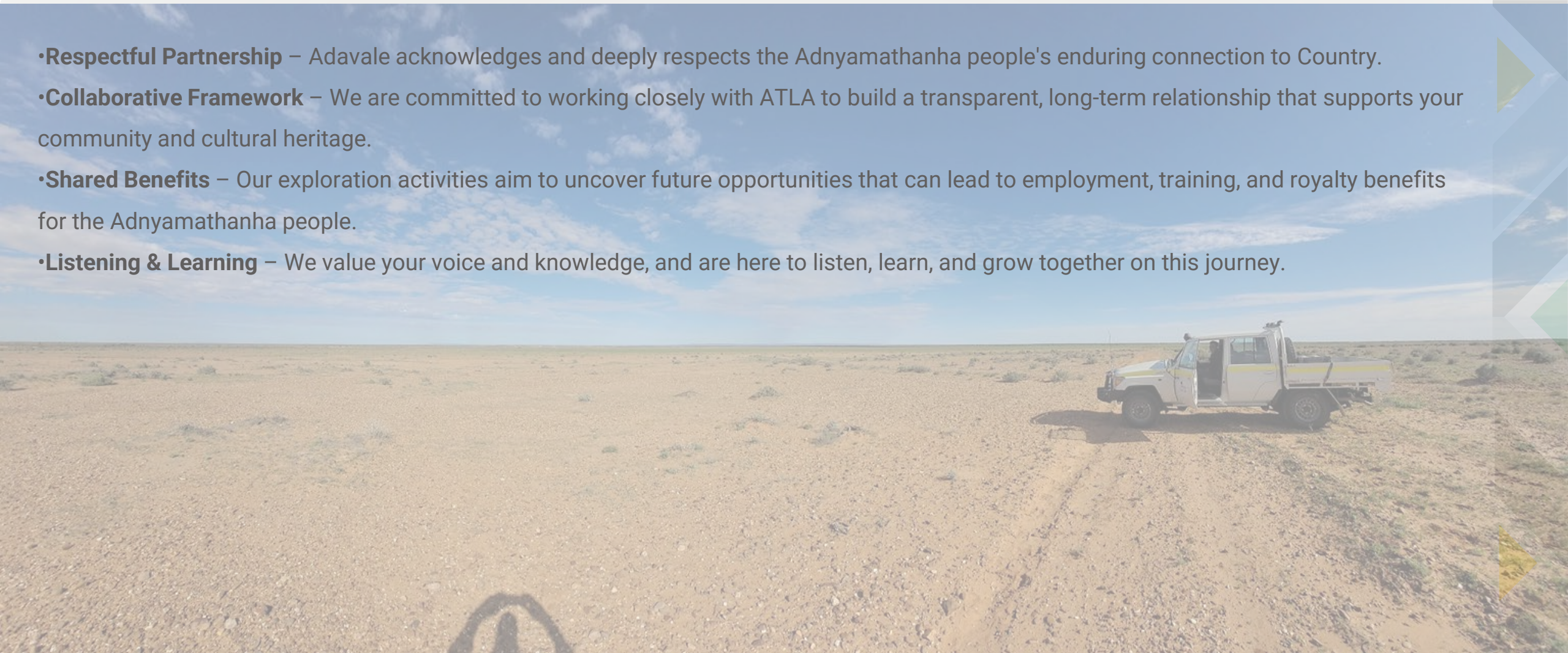
- Target area is ~13km long, with ~26 line-kilometres on 6 tracks.
- Proposed survey comprises ~66 holes at 400m spacings along tracks.
- The initial phase of drilling will be on 1,600m and 800m spacings. ~12 to 20 holes.
- Potential for infill drilling at 400m spacings in selected areas depending on results.
- Proposed to clear 25m radius around each hole site to provide room for drill rig, support vehicles and samples.
- All drilling samples and disturbance will be rehabilitated at the completion of the drilling program



# Why NTMA is IMPORTANT

Working Together with the Adnyamathanha People

- **Respectful Partnership** – Adavale acknowledges and deeply respects the Adnyamathanha people's enduring connection to Country.
- **Collaborative Framework** – We are committed to working closely with ATLA to build a transparent, long-term relationship that supports your community and cultural heritage.
- **Shared Benefits** – Our exploration activities aim to uncover future opportunities that can lead to employment, training, and royalty benefits for the Adnyamathanha people.
- **Listening & Learning** – We value your voice and knowledge, and are here to listen, learn, and grow together on this journey.



Mundowdna Depocentre. Looking north along Line 6 at the eastern end of Line 4.

# Contact & Stay Connected

Let's Stay in Touch

## Allan Ritchie

Executive Chairman and CEO  
[allan@adavaleresources.com](mailto:allan@adavaleresources.com)

## Andrew Rust

Consultant Geologist – Uranium  
[andy.rust@bigpond.com](mailto:andy.rust@bigpond.com)



[www.adavaleresources.com](http://www.adavaleresources.com)



[investor@adavaleresources.com](mailto:investor@adavaleresources.com)



Adavale Resources Limited



@AdavaleL