

Proposal for a new Mineral Exploration NTMA



Havilah Resources
Strategic Minerals in South Australia

- Havilah history
- Where Havilah explores
- Mineral Exploration
- New Mineral Exploration NTMA and opportunities for ATLA

Note: NTMA means Native Title Mining Agreement as defined by legislation to describe agreements for both Mineral Exploration and Mining



Kalkaroo Homestead

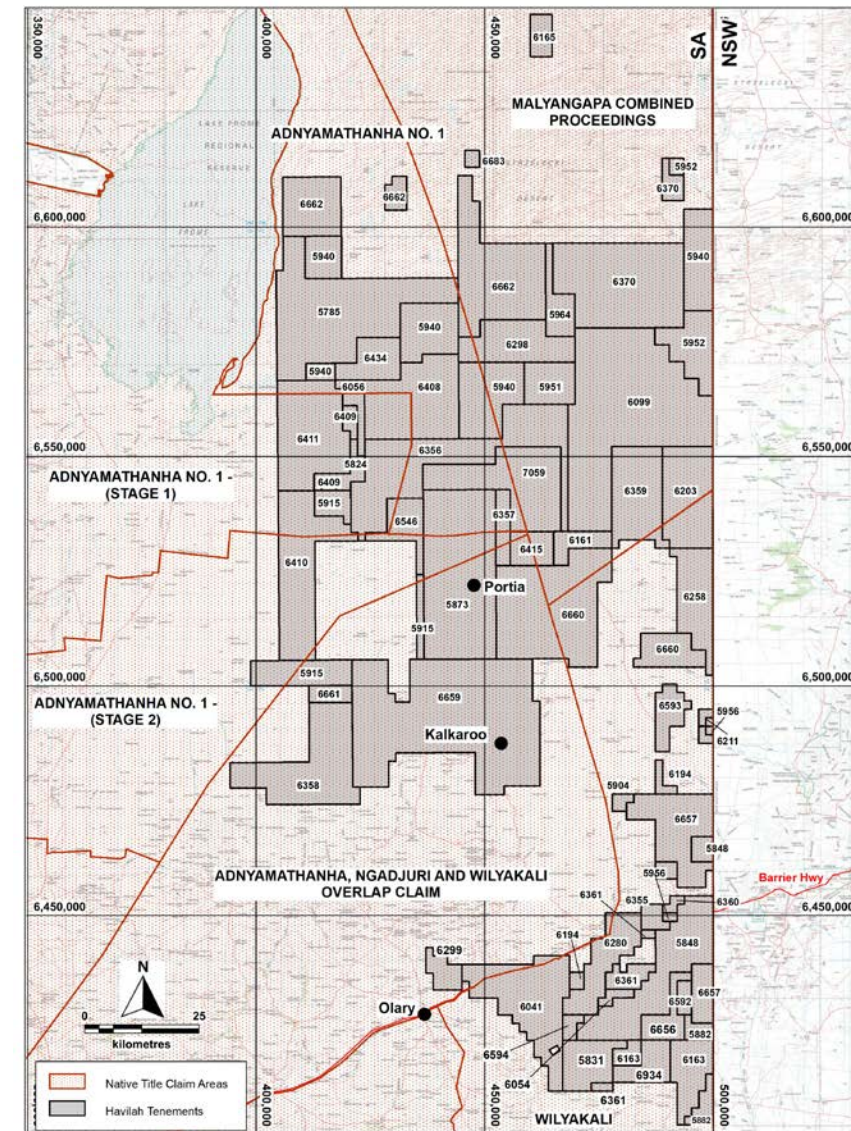


Havilah History



Havilah Resources
Strategic Minerals in South Australia

- South Australian mineral exploration company
- Exploring in the Curnamona Province since 2004
- Our business is exploration for new mineral deposits
- Discovered:
 - Portia Gold Mine
 - Kalkaroo Copper Gold Mine (proposed)
- Enjoys a good working relationship with Adnyamathanha and ATLA via existing mineral Exploration NTMA, heritage surveys and community meetings
- Existing mineral exploration NTMAs with:
 - Adnyamathanha (ATLA)
 - Njadjuri, Adnyamathanha, Wilyakali (NAWNTAC)
 - Wilyakali
 - Malyangapa (Native Title Claim)



NATIVE TITLE CLAIM BOUNDARIES - HAVILAH TENEMENTS



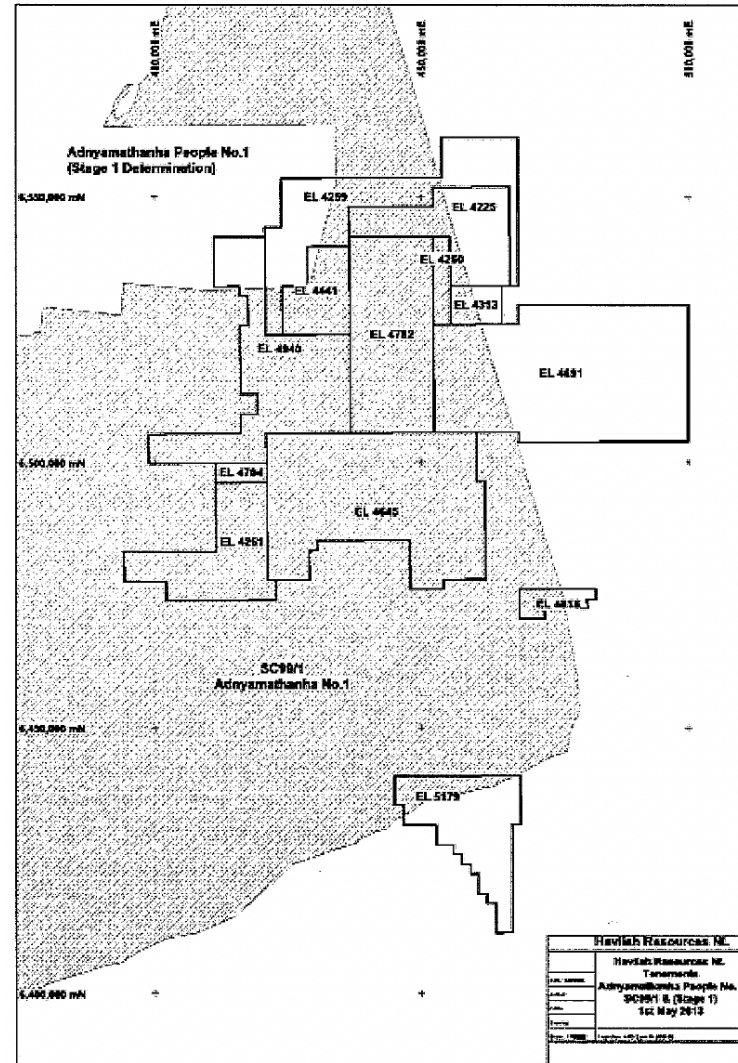
Havilah Resources Limited

Havilah History with Adnyamathanha and ATLA

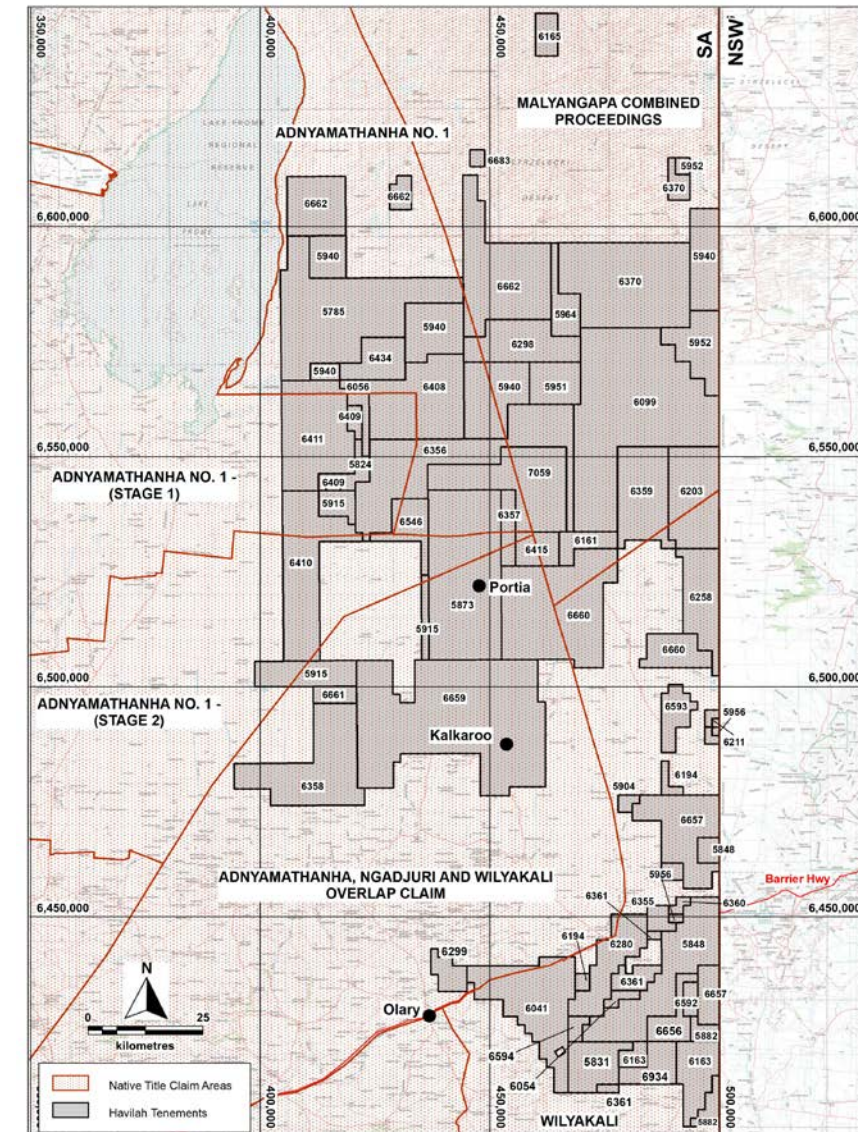


Havilah Resources
Strategic Minerals in South Australia

- 2005 to 2025 completed many Cultural Heritage Surveys
- 2008 Mining NTMA for Portia gold mine
- 2013 mineral exploration NTMA for 10 Havilah ELs
- 2019 mining NTMA for proposed Kalkaroo copper-gold mine
- 2025 proposal for a new Mineral Exploration NTMA for all Havilah Exploration Licences



Tenement Map in the existing (2013) NTMA



NATIVE TITLE CLAIM BOUNDARIES - HAVILAH TENEMENTS

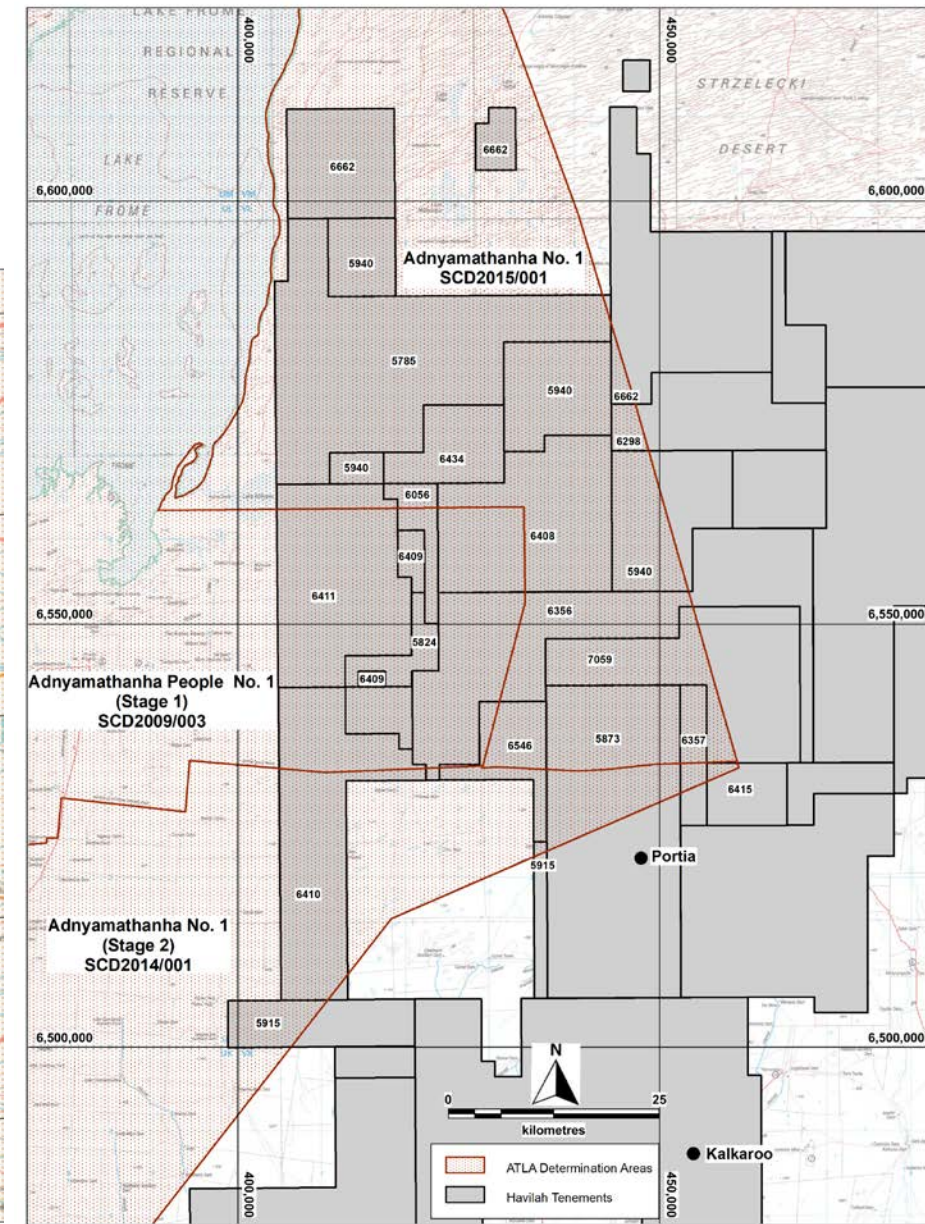
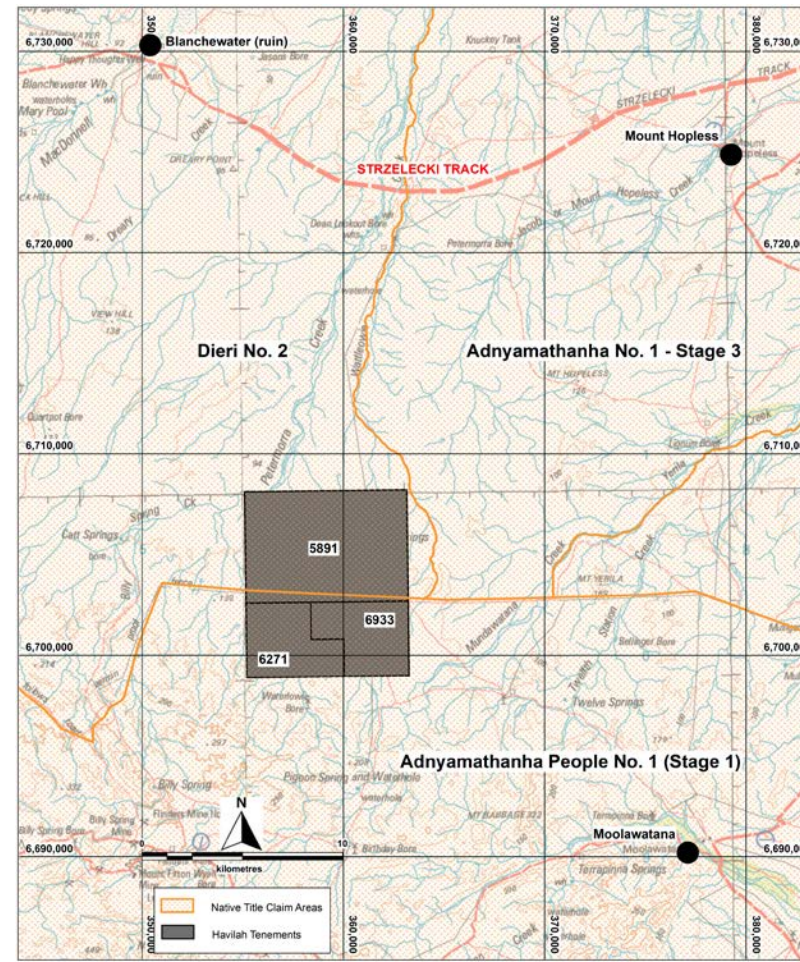


Where Havilah Explores



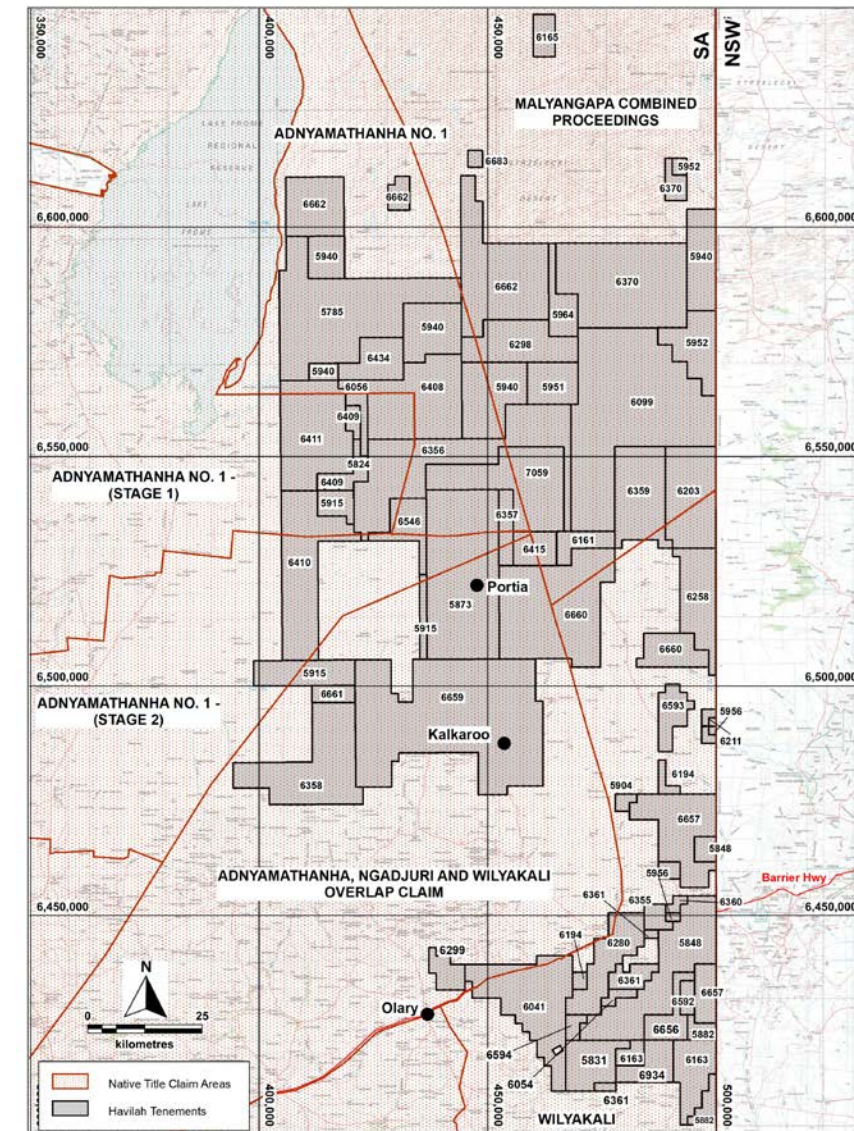
Havilah Resources
Strategic Minerals in South Australia

- Havilah's exploration activities (ELs) cover a small area in the northern Finders Ranges and a large area west of Lake Frome and extending to the NSW border and south to the Barrier Highway



Mineral Exploration

- The search for economic mineral deposits (future mines)
- Geological mapping, sampling, geophysical surveys, drilling
- On average, less than one in one hundred exploration campaigns identify economic mineral deposits
- Limited budgets and workforce paid for by investors
- Workforce includes a small number of highly specialised employees and contractors
- Generates no income for Havilah until significant mineral deposits are discovered and proved economic to mine
- Mineral Exploration NTMA establishes a working relationship with ATLA and facilitates cultural heritage surveys
- Discovery of a new mine will require negotiation of a new and separate Mining NTMA



New Mineral Exploration NTMA and Opportunities for Adnyamathanha and ATLA

- Adnyamathanha and ATLA opportunities:
 - Contract for Adnyamathanha to work on country doing cultural heritage surveys
 - Identifying and recording of cultural heritage for future generations
- Demonstrates Havilah's respect and seriousness regarding Adnyamathanha cultural heritage
- Enables exploration activities which are needed to discover potential future mines.
- New mines can produce income for ATLA and opportunities for training and employment plus business ventures for Adnyamathanha. Heathgate's uranium operations are a great example of what can happen with exploration success.
- To find a mine we must explore and drill holes and to explore we need to be able to get on the ground.



ATLA – Havilah heritage survey north of Portia March 2025