

ASX: ORP



# Orpheus Uranium Ltd.

**ATLA – Information Session**  
**17<sup>th</sup> July 2025**

[orpheusuranium.com](http://orpheusuranium.com)

## ACKNOWLEDGMENT OF COUNTRY

- Orpheus Uranium acknowledges the traditional owners of the land in which we are proposing to undertake work on, that of the **Adnyamathanha**, and we pay respect to elders present and emerging.
- Orpheus recognises a that a positive relationship with the Traditional Owners and associated communities in which we explore is vital and we are committed to sustaining a long term, trusting and respectful relationship.

*Clinton Dubieniecki – Orpheus Uranium Managing Director*



*Yunta (121km); Arkaroola (182km); Erudina Woolshed (23km); Martins Well HS (67km)*



*Looking south from southern Frome Project area*



*Looking west from northern Frome Project area*



# Native Title Mining Agreement (NTMA) for Exploration



## WHY ARE WE NEGOTIATING AN NTMA?

- ✧ Provides a **critical framework** enabling companies to access land for **exploration activities**, while respecting Native Title rights and cultural heritage
- ✧ Is a **regulatory requirement**. Companies **cannot undertake exploration** without it
- ✧ Includes **provisions for heritage surveys and clearances**.
- ⊖ **Orpheus has not been able to execute an NTMA in the last 3 years**, due to administration → This process provides a genuine pathway to establish one
- ✧ This is beneficial to both explorer and the community → allows exploration activities to be undertaken



# Native Title Mining Agreement (NTMA) for Exploration



## WHY ARE WE NEGOTIATING AN NTMA?

- NTMA covers **early-stage exploration only – not production**. These activities are undertaken to assess the potential for a discovery.
- The **path from exploration to production** typically spans **minimum 7–10 years**. Exploration is a **necessary first step** toward identifying mineral resources.
- Delays in executing NTMAs** result in **delays to exploration**, which in turn **prolongs the timeline to any potential resource development and production**.





## WHO IS ORPHUS URANIUM?



Based in South Australia Orpheus is an emerging explorer with a focus in South Australia and Northern Territory.

Developing team with Managing Director Clinton Dubieniecki having almost 20 years of exploration and mining experience, and continued exposure to South Australian exploration.

Multiple geological staff with on ground exposure to the Adnyamathanha culture through previous employment



**South Australia** exploration for Sedimentary-Style Uranium (such as Beverley/Four Mile and Honeymoon)

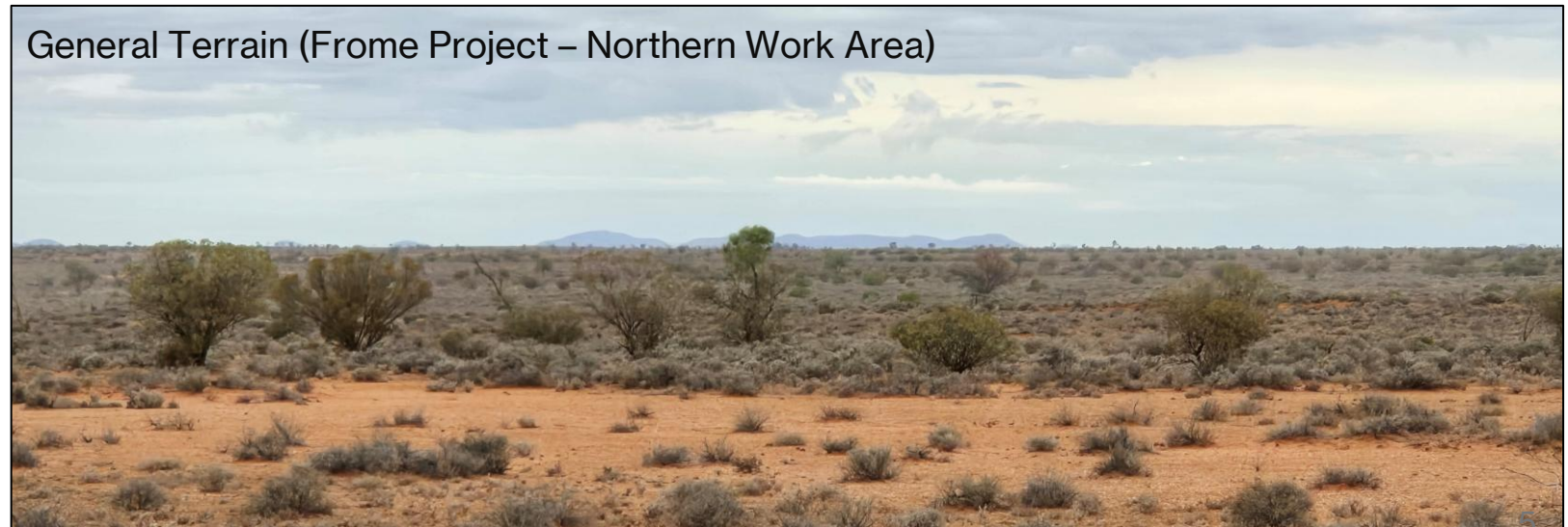


**Exploration licenses** held under a **subsidiary** called **Trachre Pty Ltd.**

General Terrain (From Erudina Prospect)



General Terrain (From Project – Northern Work Area)





# Frome & Marree Projects

## Location



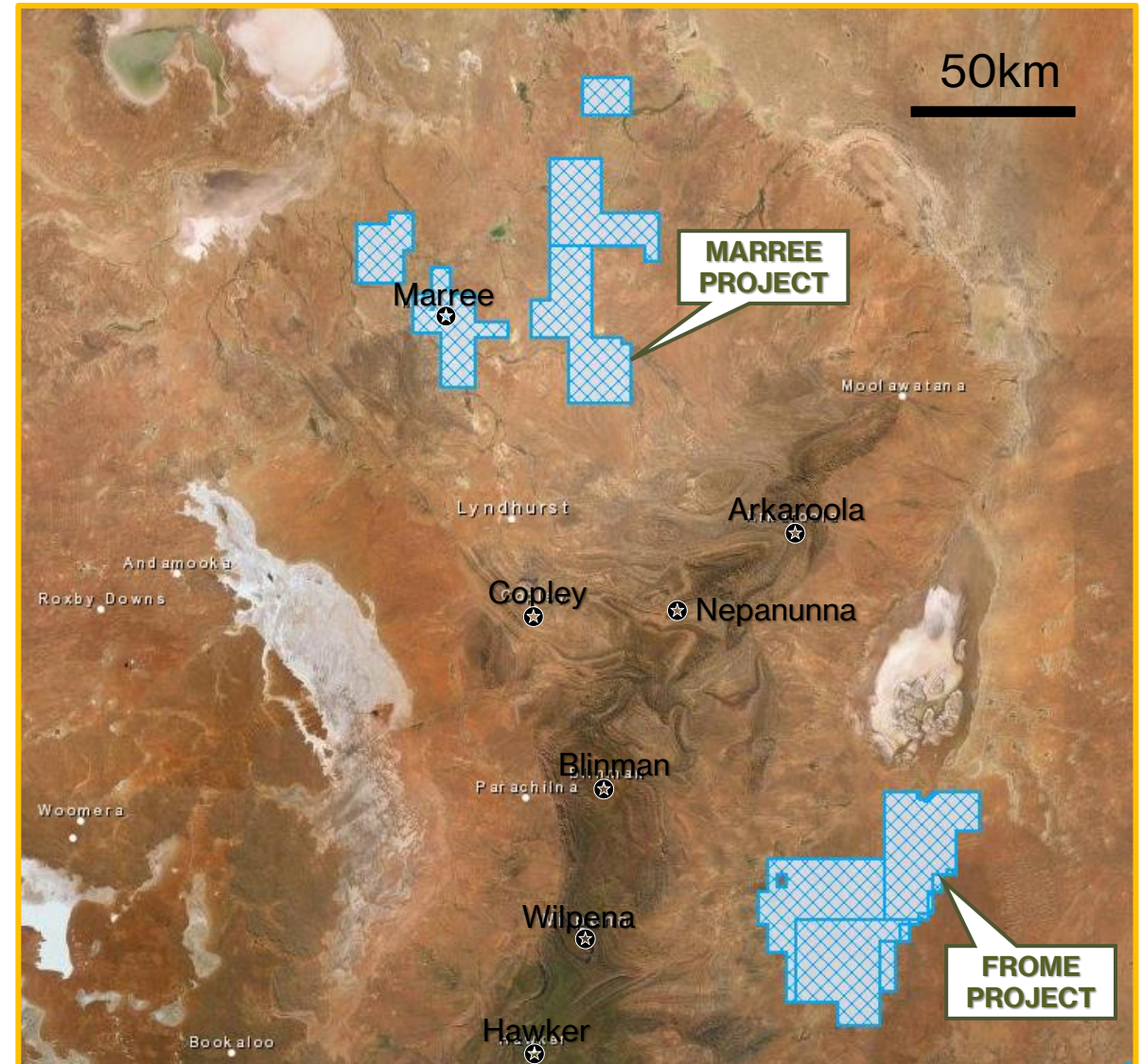
### **Frome Project** (EL 6554, 6555, 6703, 6900):

- Located ~80km north of Yunta, extending over 100km bound by the Flinders Ranges to the west
- Tenure contained with the Adnyamathanha Determination Areas (SCD2009/003 & SCD2014/001)
- Overlaps Curnamona, Erudina, Frome Downs and Billeroo Station



### **Marree Project** (EL 6913, 6914, 6915):

- Located east of The Outback Highway, ~50km southeast of Marree
- Tenure contained with the Adnyamathanha Determination Area (SCD2009/003)
- Overlaps Mount Lyndhurst, Mundowdna and Murnpeowie Station
- Northern and western portion of tenure within Dieri & Arabana determination areas





# Frome Project

## Location



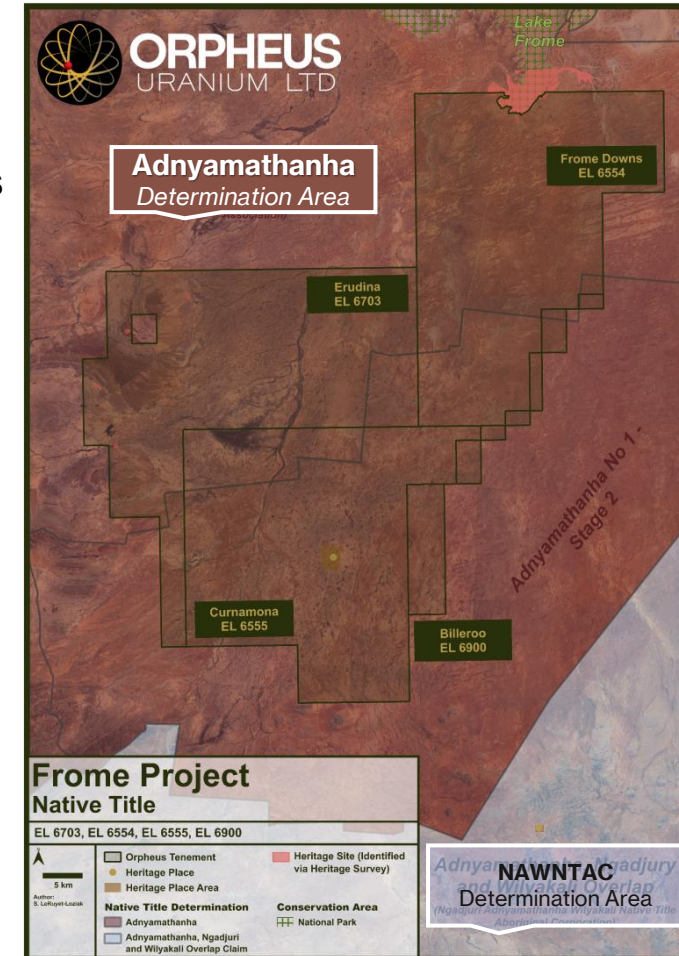
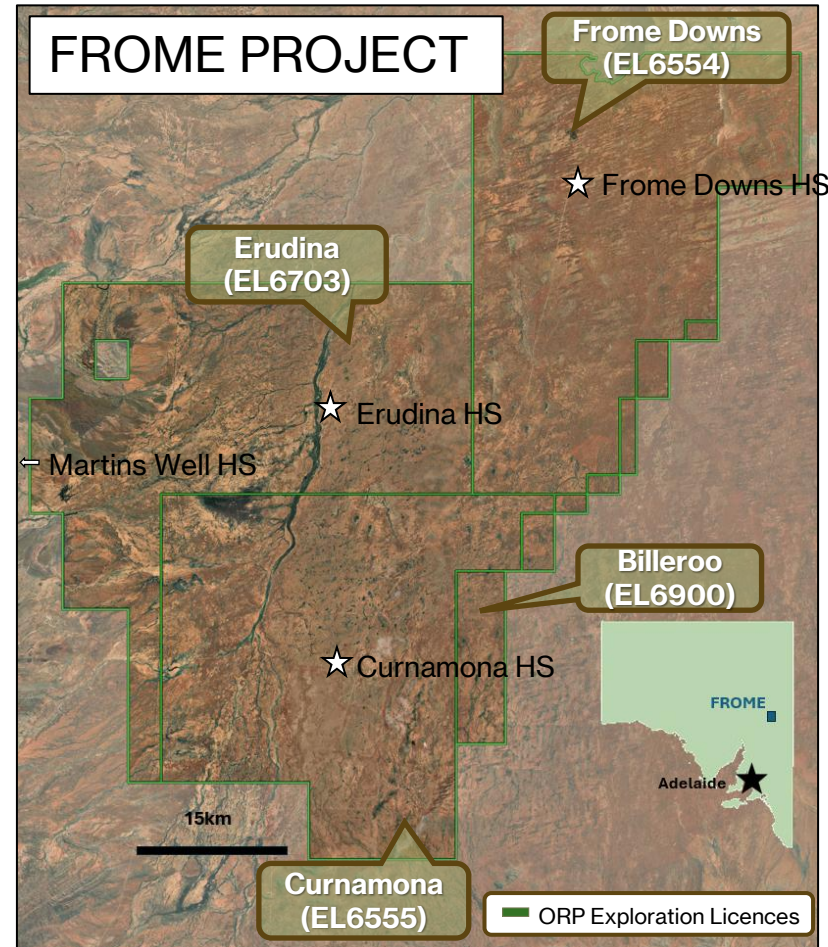
### **Frome Project** (EL 6554, 6555, 6703, 6900):

- Located ~80km north of Yunta, extending over 100km bound by the Flinders Ranges to the west
- Tenure contained with the Adnyamathanha Determination Areas (SCD2009/003 & SCD2014/001)
- Overlaps Curnamona, Erudina, Frome Downs and Billeroo Station



### **Maree Project** (EL 6913, 6914, 6915):

- Located east of The Outback Highway, ~50km southeast of Marree
- Tenure contained with the Adnyamathanha Determination Area (SCD2009/003)
- Overlaps Mount Lyndhurst, Mundowdna and Murnpeowie Station
- Northern and western portion of tenure within Dieri & Arabana determination areas





# Marree Project

## Location



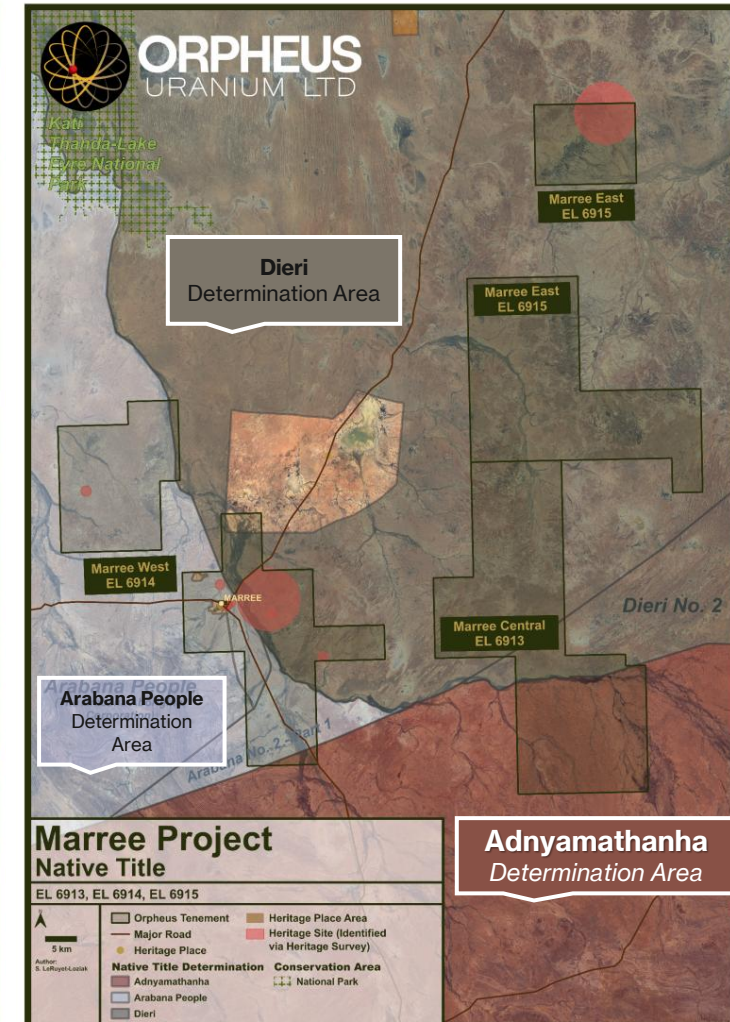
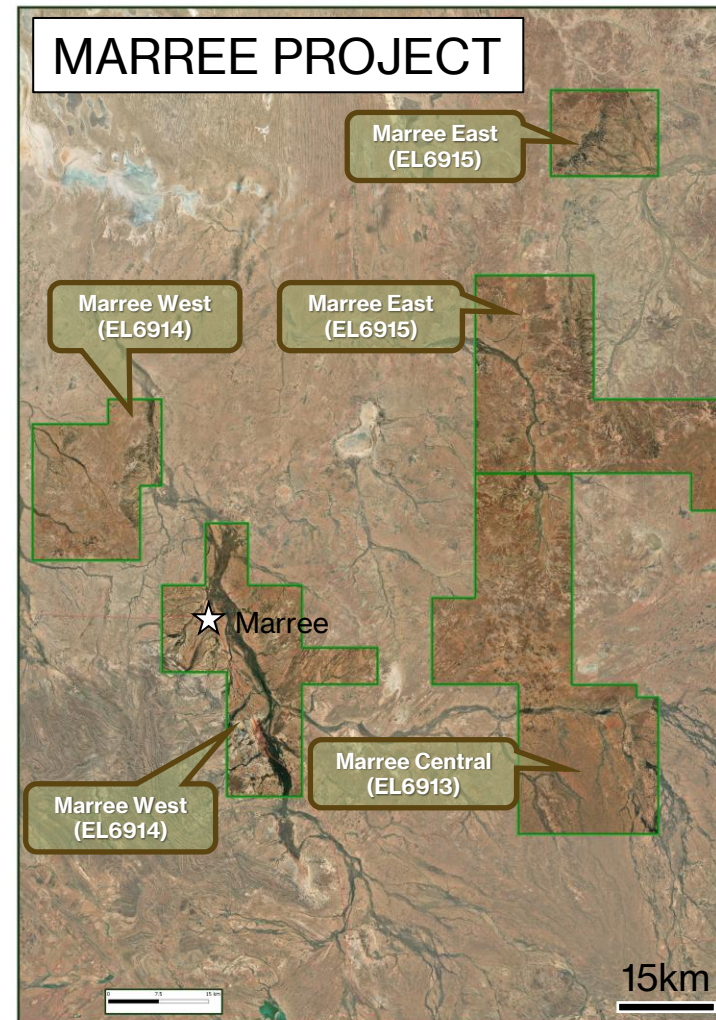
### Frome Project (EL 6554, 6555, 6703, 6900):

- Located ~80km of north of Yunta, extending over 100km bound by the Flinders Ranges to the west
- Tenure contained with the Adnyamathanha Determination Areas (SCD2009/003 & SCD2014/001)
- Overlaps Curnamona, Erudina, Frome Downs and Billeroo Station



### Marree Project (EL 6913, 6914, 6915):

- Located east of The Outback Highway, ~50km southeast of Marree
- Tenure contained with the Adnyamathanha Determination Area (SCD2009/003)
- Overlaps Mount Lyndhurst, Mundowdna and Murnpeowie Station
- Northern and western portion of tenure within Dieri & Arabana determination areas





# Frome & Marree Projects

## Location



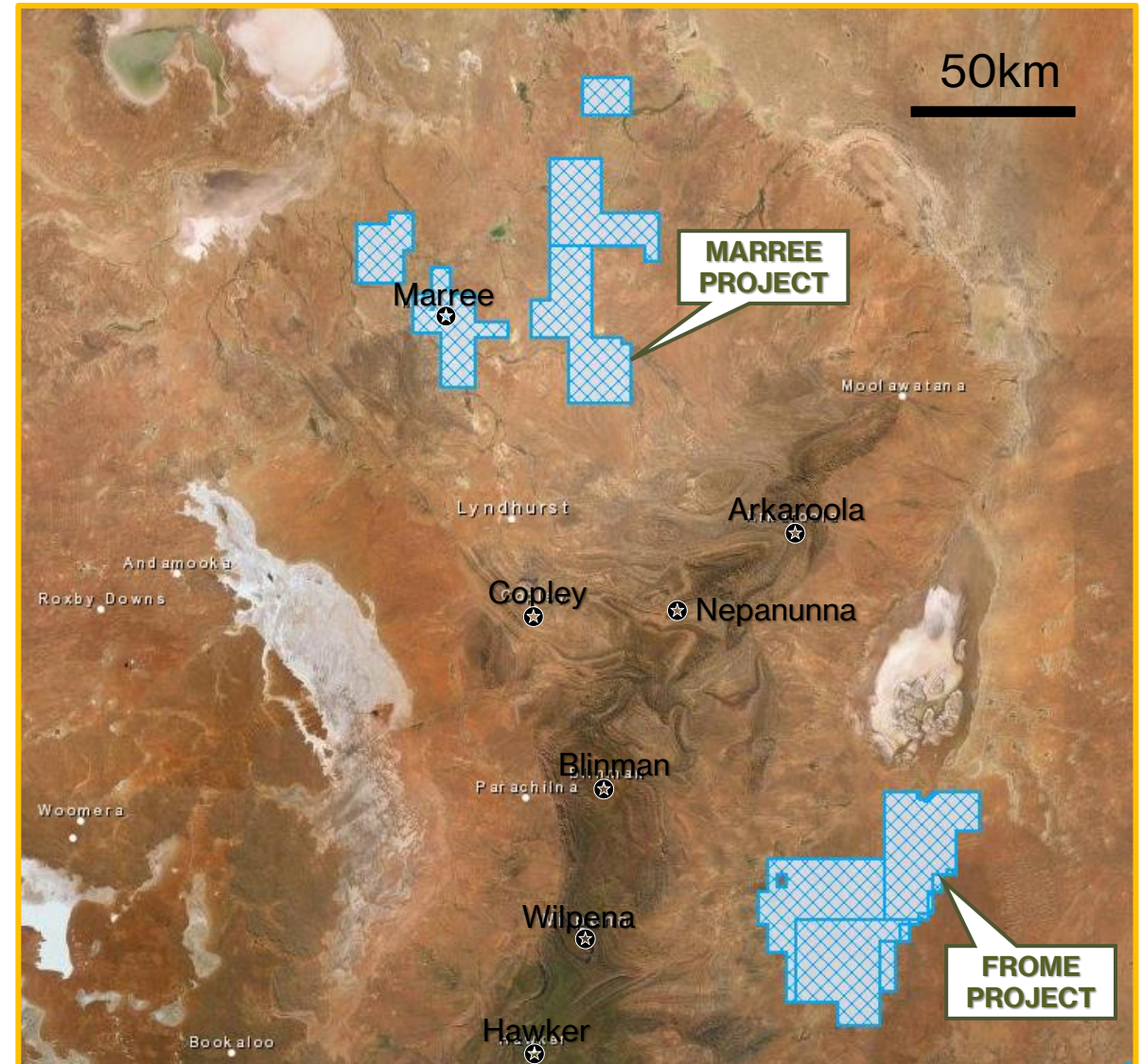
### **Frome Project** (EL 6554, 6555, 6703, 6900):

- Located ~80km north of Yunta, extending over 100km bound by the Flinders Ranges to the west
- Tenure contained with the Adnyamathanha Determination Areas (SCD2009/003 & SCD2014/001)
- Overlaps Curnamona, Erudina, Frome Downs and Billeroo Station



### **Marree Project** (EL 6913, 6914, 6915):

- Located east of The Outback Highway, ~50km southeast of Marree
- Tenure contained with the Adnyamathanha Determination Area (SCD2009/003)
- Overlaps Mount Lyndhurst, Mundowdna and Murnpeowie Station
- Northern and western portion of tenure within Dieri & Arabana determination areas





# Uranium Exploration

## PRELIMINARY TARGETING



Assist with defining target areas and can include;

- Airborne Magnetics
  - Gravity
  - Electromagnetic
  - Radiometric
- Ground Based
  - Gravity
  - Electrical techniques
  - Passive Seismic





# Uranium Exploration



## Advanced Stage Activities

- Typically use **Rotary Mud Drilling** with support from Diamond Core or Sonic Drilling.
- Uniquely Uranium exploration uses **downhole geophysics**
  - Provides downhole information including uranium grades
  - Geologist can make decisions whilst undertaking drill program for better targeting (dynamic)
- Rotary Mud drill sites typically only used for only short term (1-2 days or less)
- STRICT & ONGOING MONITORING STANDARDS FOR EXPLORATION ACTIVITIES (incl RADIATION)**

ATLA – Information Session - JULY 2025

Example drill site



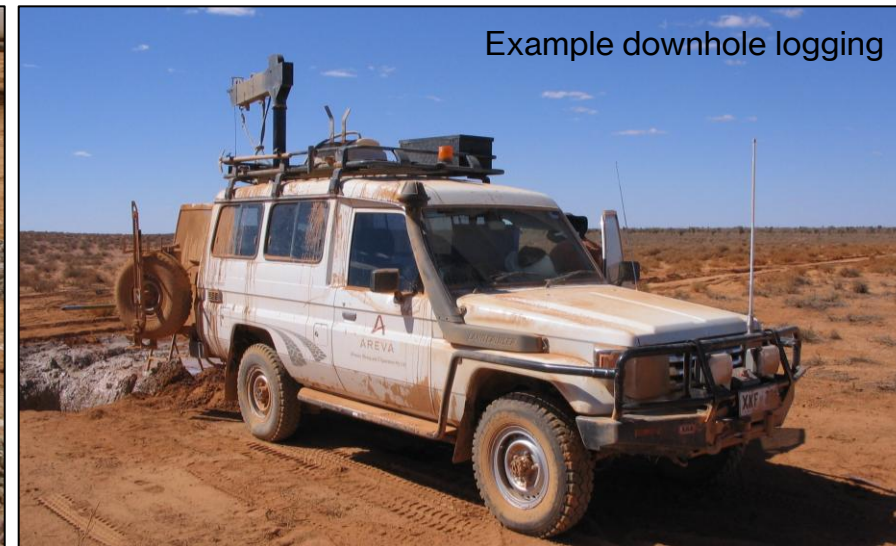
Example drill site



Example downhole cuttings



Example downhole logging





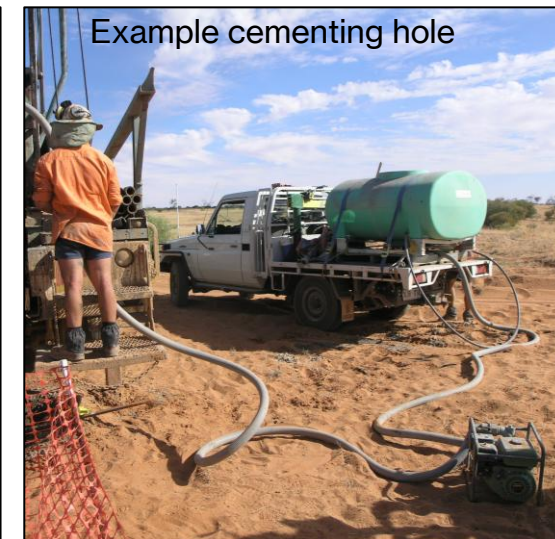
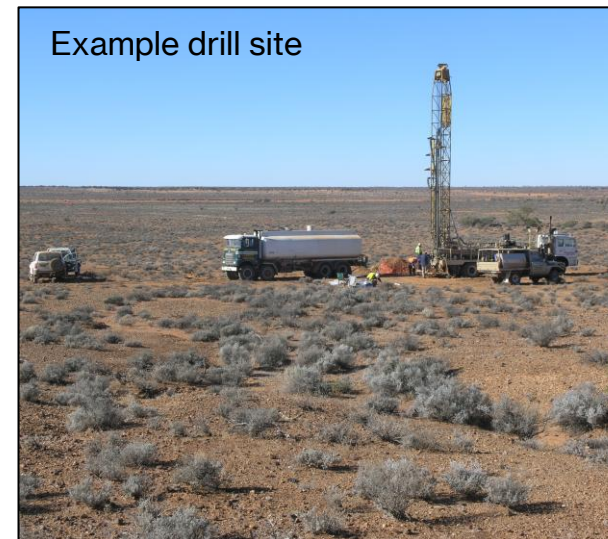
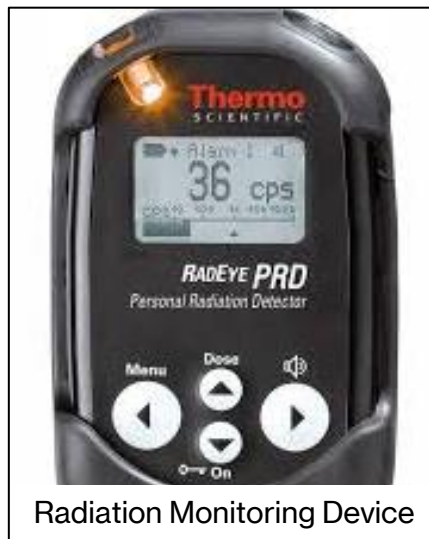
# Uranium Exploration

## Radiation & Rehabilitation



Cultural, environmental and radiation monitoring ongoing throughout all phases of the work program

- Water utilised within drilling techniques typically used for exploration → dust suppressant & assist to confine aquifers
- Drilling techniques utilises drilling fluids (muds), holes are cemented at completion → limits interaction of sub surface aquifers
- Downhole geophysics provides information on downhole radiation → supported by hand-held devices at surface allows for ongoing monitoring
- Progressive rehabilitation of sites and where applicable tracks → Includes scarification promotes seed germination





# Adnyamathanha Engagement

## COMMUNITY ENGAGEMENT

- Orpheus values learning from Traditional Owners on-country.
- Orpheus see education as a pivotal part of work programs.
- Orpheus envisages developing a relationship with the Adnyamathanha in which we respectfully work together to achieve desired outcomes.



Lemon Myrtle



Bush Banana



Bush Lime



Quandong



# Contact Us

---

Registered Office:

79 King William Road  
Unley, South Australia 5061

**P.** +61 8231 0381

**E.** [info@orpheusuranium.com](mailto:info@orpheusuranium.com)

**W.** [www.orpheusuranium.com](http://www.orpheusuranium.com)



# Frome & Marree

## Location



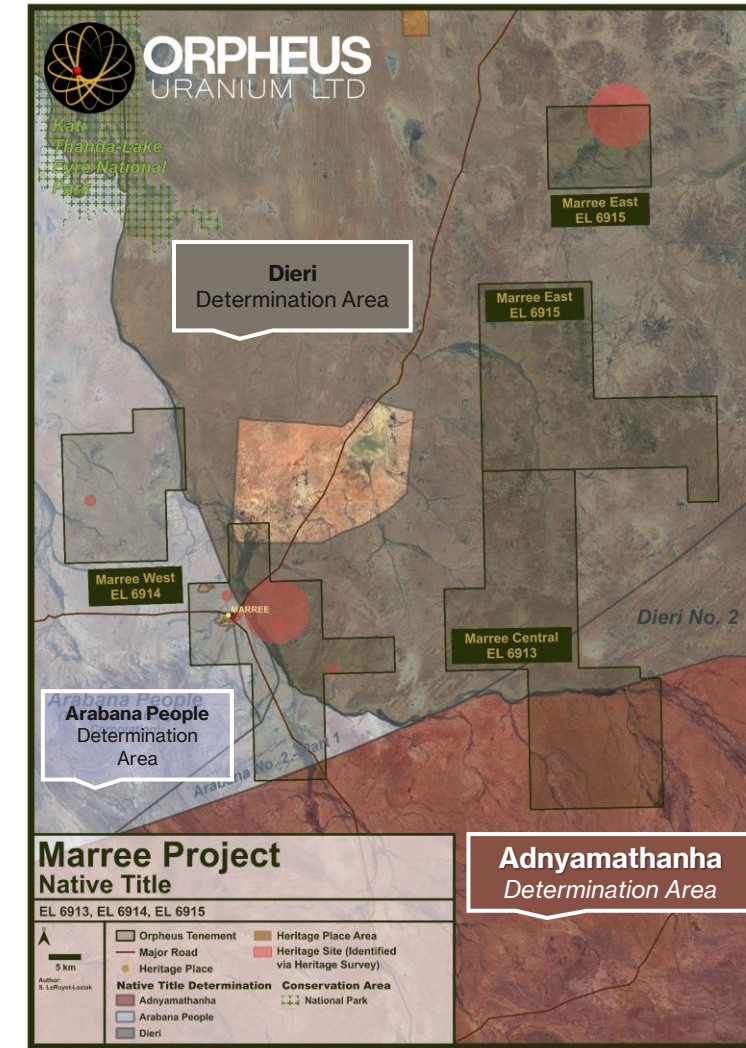
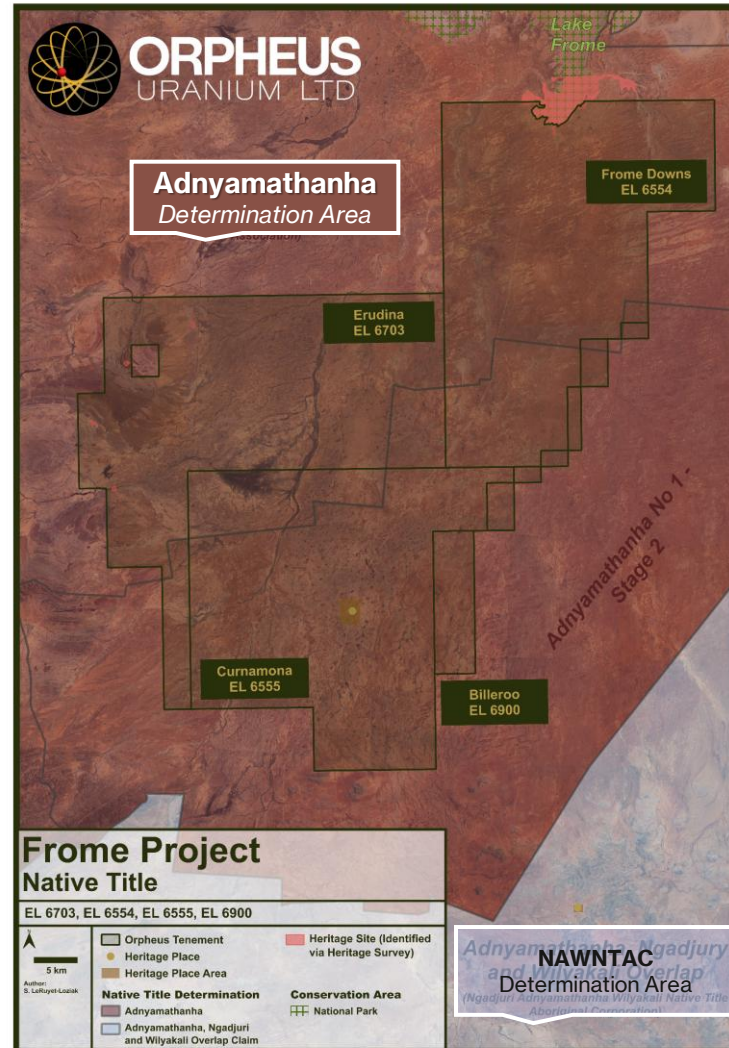
### Frome Project (EL 6554, 6555, 6703, 6900):

- Located ~80km north of Yunta, extending over 100km bound by the Flinders Ranges to the west
- Tenure contained with the Adnyamathanha Determination Areas (SCD2009/003 & SCD2014/001)
- Overlaps Curnamona, Erudina, Frome Downs and Billeroo Station



### Marree Project (EL 6913, 6914, 6915):

- Located east of The Outback Highway, ~50km southeast of Marree
- Tenure contained with the Adnyamathanha Determination Area (SCD2009/003)
- Overlaps Mount Lyndhurst, Mundowdna and Murnpeowie Station
- Northern and western portion of tenure within Dieri & Arabana determination areas





## Aboriginal Sites



### Erudina (EL 6703):

- 4 Aboriginal sites within exploration licence registered with the Central Archive
- Sites: 5008, 6355, 6356, 6358
- Status: Reported (all)
- Type: Cultural (all)



### Frome Downs (EL 6554):

- 1 Aboriginal site within exploration licence registered with the Central Archive
- Site No: 6209 – Lake Frome
- Status: Reported
- Type: Cultural

