



INFORMATION SESSION
Adnyamathanha Traditional Lands Association (ATLA)
Native Title Mining Agreement (for Exploration)
Cross Keys Mining
September 2025



Acknowledgement of Country



Cross Keys Mining acknowledge the Adnyamathanha Traditional Owners and Custodians of the land on which we propose to work and pay respect to your Elders past, present and emerging.



Drew Martin – Managing Director



Native Title Agreement



- ☐ A Native Title Management Agreement (NTMA) provides a framework enabling explorers to access land for mineral exploration activities;
- ☐ An NTMA is an essential component of ensuring explorers respect Native Title rights and cultural heritage and have an understanding the heritage specific to the proposed exploration area;
- ☐ An NTMA is a regulatory requirement – without an NTMA Companies cannot undertake exploration;
- ☐ The NTMA to be considered at the upcoming Adnyamathanha Common Law Holders meeting sets out the approval process for heritage surveys and clearances.
- ☐ The NTMA provides mechanisms for oversight of explorers by ATLA and formal channels for communications and ability to ask questions about exploration processes and activities;
- ☐ The NTMA IS FOR EXPLORATION ONLY. A separate agreement is required for mining and requires consultation with the ATLA communities;
- ☐ Cross Keys Mining recognises the NTMA as the first step in an ongoing process of developing relationships that are respectful and seeking common objectives. The aim of the NTMA is to build trust by working with the Adnyamathanha Community



Who is Cross Keys Mining



Cross Keys Mining was formed in 2015 to explore for minerals in the Northern Flinders Ranges. In 2016 EL 5847 was granted to Cross Keys Mining

- Cross Keys Mining is a private company operated by the Martin family;
- Cross Keys Mining is not a mining company, only business interest the EL5847;
- Exploration activities are focused on a single lease, EL5847;
- Early exploration activity has been ongoing since 2016;
- Management and exploration activities are all conducted by the Managing Director, Drew Martin;
- Current exploration lease is showing potential to host multiple mineral deposits;
- NTMA process commenced in 2020;
- Mineral deposits need to be explored to validate economics of the mineral occurrence. This is the next step that requires a respectful and trusting relationship with ATLA communities.

Location of Exploration Lease



EL 5847 is located in the Northern Flinders Ranges, 42 km Southeast from the town of Copley in South Australia and is accessed via Blinman (Arkaroola – Blinman Road (dirt)), 3 hour drive from Blinman via Nantawarrina and Mulga View Station. This route requires access via tracks that follow creek beds

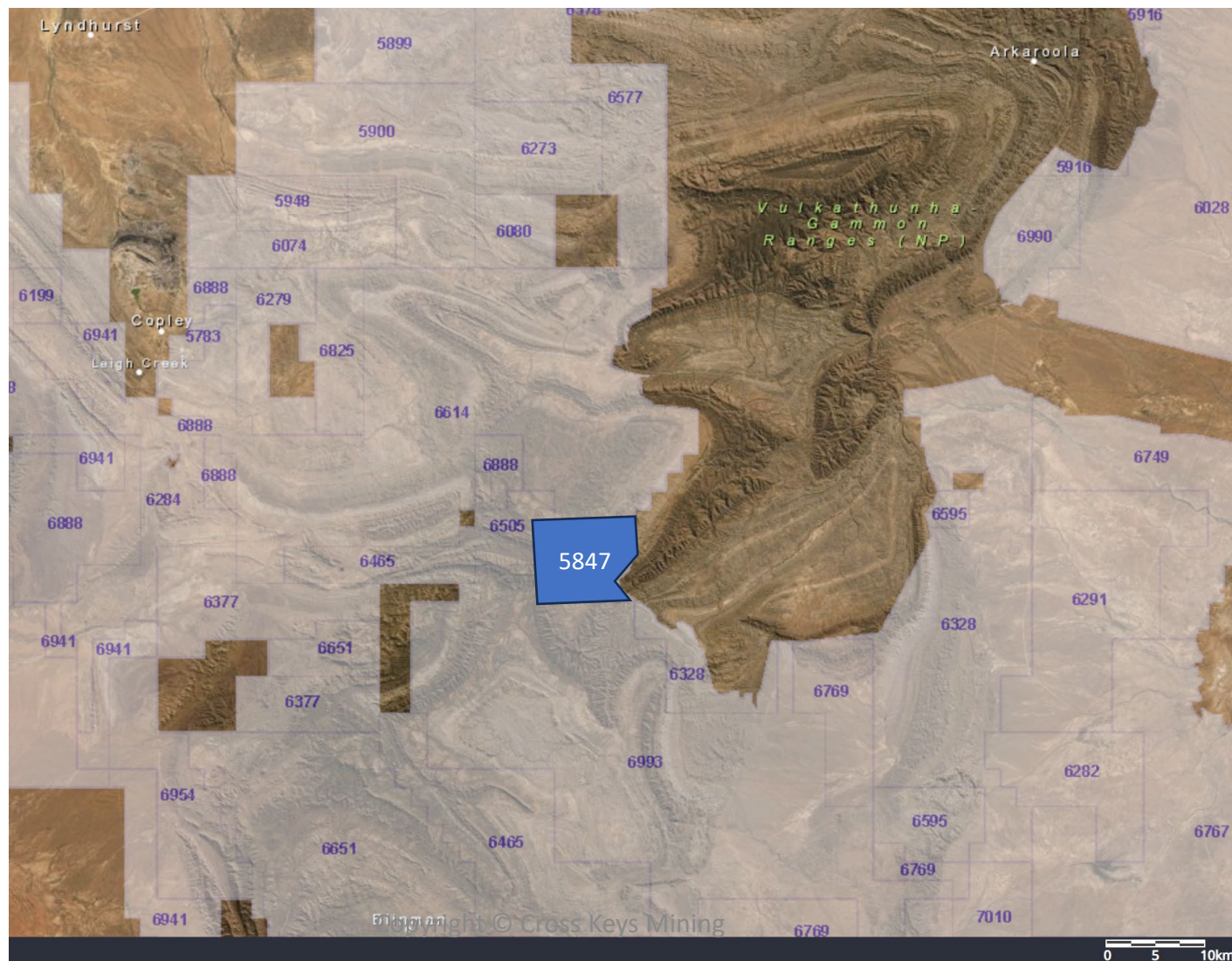


The alternate route is via Copley along the Gammon Ranges Highway and through Angepena Station, which requires permission to enter and is a 2 hour drive from the Leigh Creek town. Both routes require a 4 x 4 to access.





EL5847 Exploration Lease





Target Minerals



Minerals have been mined and explored for in the Angepena Goldfield region since the late 1800's. Following work conducted by previous mining companies and exploration companies, Cross Keys Mining is using existing and new exploration data to identify mineral deposits and explore the economic potential of mineral deposits on the Christmas Mine lease, EL5847. Target minerals include:

- Gold
- Silver
- Copper
- Lead
- Zinc
- Cobalt





Benefit of NTMA for Adnyamathanha

The following benefits have been identified, both short term and long term:

Short term:

- ☐ Providing cultural and heritage training to Cross Keys Mining and contractor personnel;
- ☐ Opportunities for Adnyamathanha people to work on country doing cultural heritage surveys and monitoring exploration
- ☐ Identifying and recording of cultural heritage for future generations
- ☐ Enables exploration activities which are needed to discover a potential future mine

Longer Term:

- ☐ Platform to develop a respectful partnership between the Adnyamathanha Community and Cross Keys Mining
- ☐ Working together we seek to build a long-term relationship based on mutual trust to support your Community and Cultural Heritage, which can include business and employment opportunities;
- ☐ When an exploration program is successful there are shared benefits and future opportunities for training, education, employment and royalty income for the Community

Cross Keys Mining, where appropriate, wants to listen and learn from Adnyamathanha Communities the culture and heritage with respect to land that our exploration lease is located on.



Cross Keys Mining Commitment

Cross Keys Mining and is committed to maintaining a respectful and engaging link with all communities that have a stake and/or we could help in developing a stronger community. Our commitment to ATLA community includes:

- Conduct all exploration activities within the required framework of the NTMA ;
- Conduct all exploration activities within the required framework of the E-PEPR (environmental requirements);
- Develop working relationships with the ATLA community to enable cultural training for exploration teams, provide employment opportunities within survey teams and enable monitoring of exploration activities as required;
- Provide communications of exploration activities and progress;
- Potentially develop an economic mineral deposit that builds stronger local communities;
- Target a low impact exploration project(s) to enable future generations to experience the natural beauty of the region that we are working and living.



Contact Details



Drew Martin

Managing Director

Cross Keys Mining Pty Ltd

Email: drew@blastitglobal.com

PH: 0477 339 648





Summary



Cross Keys Mining has been granted an exploration licence EL5847, 45 km South East of Leigh Creek town, called Christmas Mine lease. This information presentation covered the following topics:

- Native Title Agreement;
- Who is Cross Keys Mining;
- The lease
- Target minerals;
- Benefits of NTMA;
- Cross Keys Mining Commitment;
- Contact details.



Copper minerals

Should any questions arise from the information presented in this presentation do not hesitate to contact Drew Martin to discuss